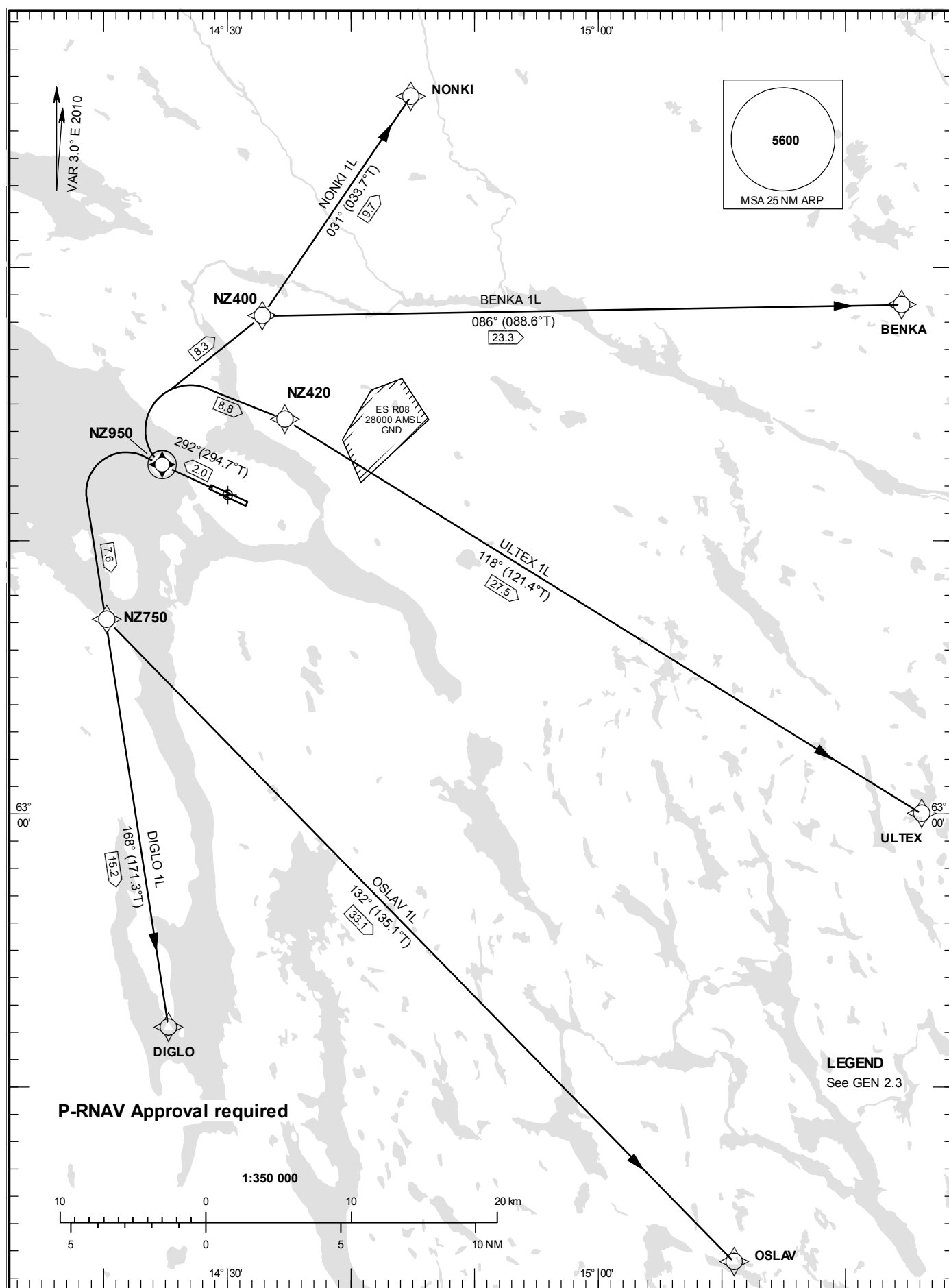


ÅRE ÖSTERSUND

RNAV (GNSS) SID RWY 30

STANDARD INSTRUMENT
DEPARTURE CHART (SID) -
ICAOHGT and ALT in ft
BRG are MAG (True)
TA 6000 ft AMSL

ÖSTERSUND TOWER 135.655



ÅRE ÖSTERSUND

Prescribed Coding of RNAV (GNSS) SID for RWY 30

REMARK

INITIAL CLIMB CLEARANCE: Climb to 6000 ft unless otherwise specified. Common to all RNAV SID.

P-RNAV Approval required.

MNM climb gradient required by ATC: Aircraft proceeding on SID shall use 6.6% (400 ft/NM) as a minimum gradient of climb up to 6000 ft MSL. Aircraft unable to conform to this procedure shall inform ATC accordingly.

RNAV SID	Path Descriptor	Waypoint Identifier	Fly-over	Course °M(°T)	Turn Direction	Altitude	Speed	VPA/ RDH	Rec Navaid	Navigation Specification
BENKA 1L (BENK1L)	CF	NZ950	Y	292°	R				OSS	
	DF	NZ400								
	TF	BENKA								

SID instruction: Climb on track 292° to NZ950 – NZ400 – BENKA

RNAV SID	Path Descriptor	Waypoint Identifier	Fly-over	Course °M(°T)	Turn Direction	Altitude	Speed	VPA/ RDH	Rec Navaid	Navigation Specification
DIGLO 1L (DIGL1L)	CF	NZ950	Y	292°	L				OSS	
	DF	NZ750								
	TF	DIGLO								

SID instruction: Climb on track 292° to NZ950 – NZ750 – DIGLO

RNAV SID	Path Descriptor	Waypoint Identifier	Fly-over	Course °M(°T)	Turn Direction	Altitude	Speed	VPA/ RDH	Rec Navaid	Navigation Specification
NONKI 1L (NONK1L)	CF	NZ950	Y	292°	R				OSS	
	DF	NZ400								
	TF	NONKI								

SID instruction: Climb on track 292° to NZ950 – NZ400 – NONKI

RNAV SID	Path Descriptor	Waypoint Identifier	Fly-over	Course °M(°T)	Turn Direction	Altitude	Speed	VPA/RDH	Rec Navaid	Navigation Specification
OSLAV 1L (OSLA1L)	CF	NZ950	Y	292°	L				OSS	
	DF	NZ750								
	TF	OSLAV								

SID instruction: Climb on track 292° to NZ950 – NZ750 – OSLAV

RNAV SID	Path Descriptor	Waypoint Identifier	Fly-over	Course °M(°T)	Turn Direction	Altitude	Speed	VPA/RDH	Rec Navaid	Navigation Specification
ULTEX 1L (ULTE1L)	CF	NZ950	Y	292°	R				OSS	
	DF	NZ420								
	TF	ULTEX								

SID instruction: Climb on track 292° to NZ950 – NZ420 – ULTEX